

Güntner GVH 050.1.A/2x2 S

Specifications

Производитель	Güntner
Тип	GVH 050.1.A/2x2 S
Тип продукта	Air Cooled Condenser
кВт	65,2
К-во вентиляторов	4
Скорость вращения вентиляторов	850
Хладагент	Freon
Поток воздуха м³/час	14.780
диаметр вентиляторов	500 mm
Ø	
поверхность (м2)	207
Объем трубки	54 dm³
Размеры	2300x1700x1420 mm (LxWxH)
вес	181 kg
Stock	1

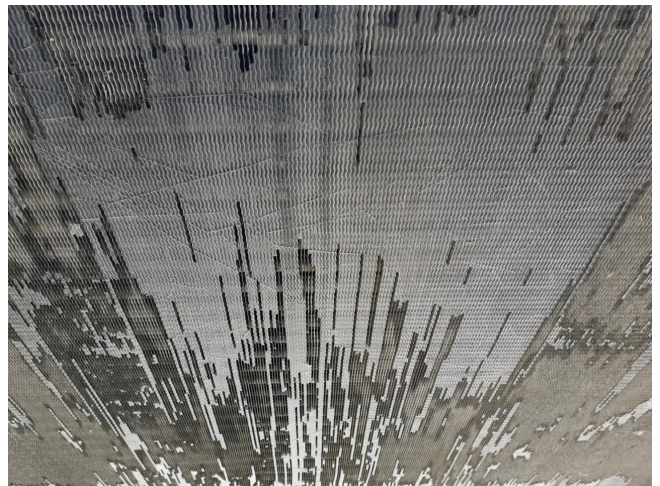
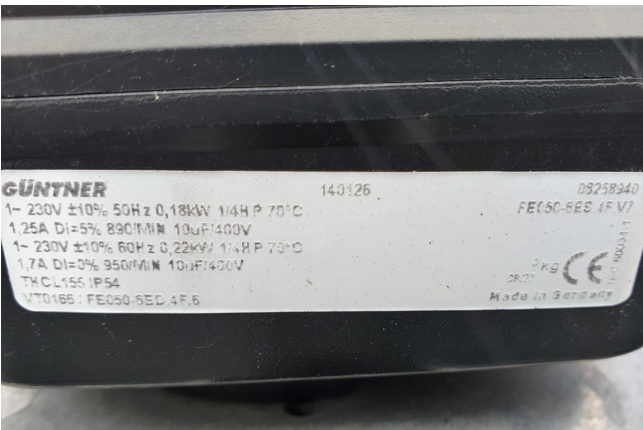


Description

Used Güntner GVH 050.1.A/2x2 S

Used Güntner GVH 050.1.A/2x2 S air cooled condenser. Complete with 4 Güntner fan 50 Hz - 0,18kW- 890 RPM - diameter 500 mm. The condenser has an airflow of 14.780 m³/h.

*All components of this used condensers will be tested on good working, leak free condition (electro engines), condensing block, bearings. Choosing HOSBV means buying with warranty. We perform a industrial cleaning. Also, we can arrange your shipment.





Your partner for used commercial and industrial refrigeration equipment

GVH/V .../.../.../...															
Typ Type	Q _{cl} Nennleistung Nominal capacity		V _l Luftvolumenstrom Air volume flow		aufgenommene el. Leistung consumed power		Energieeffizienzklasse Energy efficiency class	Schalldruck- pegel Sound pressure level		Strang- Anzahl Number of passes	Gewicht Weight	Rohr- volumen Tube volume	Fläche Surface		
	R104A Δt = 15 K		Δ	Y	Δ	Y		Δ	Y					Δ	Y
	Δ	Y	Δ	Y	Δ	Y		Δ	Y					Δ	Y
	kw	kw	m ³ /h	m ³ /h	kw	kw		dB(A)10m			kg	l	m ²		
045.1A/1... W	14.6	—	3420	—	0.18	—	B	36	—	4	61	8	40		
045.1C/1... W	16.8	—	3750	—	0.18	—	B	36	—	6	72	10	54		
045.1A/2... W	29.9	—	6920	—	0.36	—	B	39	—	9	108	15	83		
045.1C/2... W	34.1	—	7540	—	0.36	—	B	39	—	9	133	19	111		
045.1A/3... W	44.7	—	10400	—	0.55	—	B	40	—	13	156	22	126		
045.1C/3... W	50.9	—	11300	—	0.53	—	B	40	—	18	192	28	167		
050.1A/1... D+S	20.4	16.1	4970	3680	0.28	0.18	B / B	39	32	6	82	11	60		
050.1C/1... D+S	24.3	19.7	5540	4220	0.28	0.18	B / A	39	32	6	96	16	73		
050.1A/2... D+S	41.4	32.9	10040	7460	0.57	0.36	B / B	42	35	12	152	22	104		
050.1C/2... D+S	49.1	39.7	11120	8480	0.55	0.35	B / A	41	34	12	179	31	150		
050.1A/3... D+S	62.8	50.0	15110	11240	0.85	0.55	B / B	43	36	15	221	32	157		
050.1B/3... D+S	68.8	55.6	16080	12140	0.84	0.53	B / B	43	36	15	241	40	191		
050.1C/3... D+S	74.0	59.6	16700	12740	0.83	0.52	B / A	43	36	20	261	47	226		
050.1B/4... D+S	92.0	74.4	21460	16210	1.12	0.71	B / B	44	37	20	321	53	256		
065.1A/1... D+S	32.0	26.0	8410	6390	0.69	0.44	C / C	47	41	10	99	16	66		
065.1B/1... D+S	36.2	29.6	9090	6990	0.67	0.43	C / C	47	41	10	112	19	81		
065.1C/1... D+S	39.4	32.5	9550	7420	0.65	0.42	C / B	47	41	10	123	22	96		
065.1A/2... D+S	66.0	53.7	17020	12950	1.38	0.88	C / C	50	44	16	184	30	136		
065.1B/2... D+S	73.3	60.0	18320	14110	1.34	0.86	C / C	49	43	20	207	36	166		
065.1C/2... D+S	79.6	65.6	19190	14920	1.3	0.85	C / B	49	43	20	230	43	196		
065.1A/3... D+S	99.1	81.6	25630	19510	2.07	1.33	C / C	51	45	20	268	46	206		
065.1B/3... D+S	111.1	91.5	27840	21520	2.01	1.3	C / B	51	45	27	302	56	241		
065.1C/3... D+S	120.1	99.1	28830	22420	1.95	1.27	C / B	51	45	27	345	66	296		
065.1B/4... D+S	148.2	121.3	36760	28390	2.68	1.73	C / B	52	46	41	473	73	336		
050.1A/2x2... D+S	82.8	65.8	20080	14930	1.14	0.73	B / B	44	37	24	181	54	207		
050.1C/2x2... D+S	98.2	79.4	22240	16960	1.1	0.7	B / A	44	37	24	207	69	299		
050.1A/2x3... D+S	126.2	100.4	30220	22480	1.7	1.09	B / B	46	39	31	321	72	314		
050.1C/2x3... D+S	148.3	119.4	33400	25490	1.66	1.06	B / A	46	39	41	457	101	452		